

**MONAD
TERRACE**
SOUTH BEACH BAY
BY ATELIERS JEAN NOUVEL

4D

TOTAL: 3721 SQ FT / 346 SQ M
INTERIOR: 2532 SQ FT / 235 SQ M
EXTERIOR: 1189 SQ FT / 110 SQ M

3 BEDROOMS
3.5 BATHS

UNIQUE FEATURES

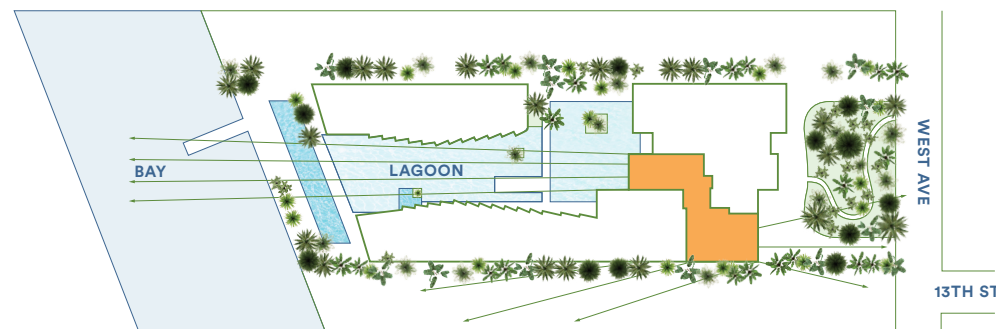
- / Seamless indoor/outdoor experience
- / Lagoon and Biscayne Bay views
- / Curated climbing garden on South terrace for shade & privacy
- / Oversized garden terrace off bedrooms
- / East, West and South exposures
- / Jean Nouvel-designed trellis with integrated planters for hanging vines and flowers
- / Media room

ARRIVAL & LANDSCAPE

- / Porte-cochère drop-off
- / Lush landscape from arrival to bay designed by Ateliers Jean Nouvel
- / Central lagoon with sun deck, aquatic plants, and infinity edge
- / Concierge; 24-hour lobby attendant
- / Sun deck with 116-foot swimming pool and hot tub overlooking Biscayne Bay
- / Pool service
- / Full service valet parking
- / Café and juice bar
- / Lagoon fitness and wellness center
- / Residents' lounge
- / Bicycle and water sports storage
- / Dock access
- / Monad Terrace bicycles and paddle boards

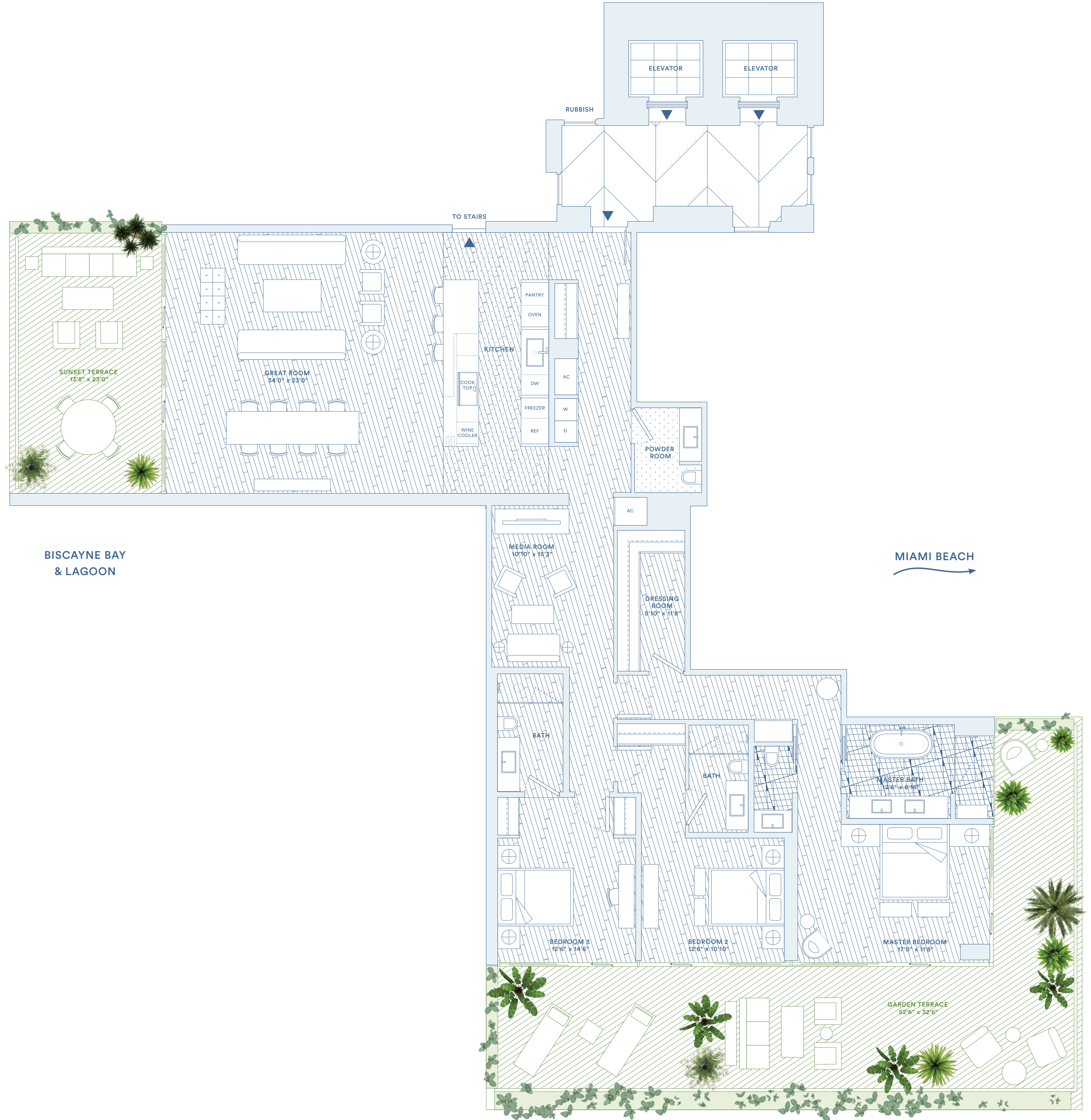
FEATURES

- / 10-foot ceilings
- / Floor-to-ceiling sliding doors opening up to 5 feet
- / Custom wood floors throughout
- / Semi-private elevator access with direct access from garage
- / Black Zeus marble and black mirrored entry
- / Custom flush doors
- / Kitchens designed by Jean Nouvel with custom mirrored honeycomb glass cabinets and brushed bronze accents
- / Sculptural cantilevered marble island in Calacatta Gold
- / Kitchens with custom wood canopy and Calacatta Gold floor
- / Fully integrated Gaggenau appliances
- / Custom marble wine rack
- / Integrated wine cooler
- / Freestanding Ago soaking tub by Antonio Lupi
- / Steam shower in master bath
- / Master baths with Calacatta Gold and Zeus marble marquetry flooring, custom floating wood vanity with Calacatta Gold counter, slab walls, and concealed medicine cabinet
- / Vola fixtures
- / Secondary baths feature Sugar Gold stone floors and a Sugar Gold vanity
- / Powder room features Verti Capri stone



13TH ST

Developer / JDS



ALL REPRESENTATIONS CANNOT BE RELIED UPON AS CORRECTLY STATING THE REPRESENTATIONS OF THE DEVELOPER. FOR CORRECT REPRESENTATIONS, MAKE REFERENCE TO THE BROCHURE AND TO THE DOCUMENTS REQUIRED BY SECTION 5508, FLORIDA STATUTES, TO BE FURNISHED BY A DEVELOPER TO A BUYER OR LESSEE.

